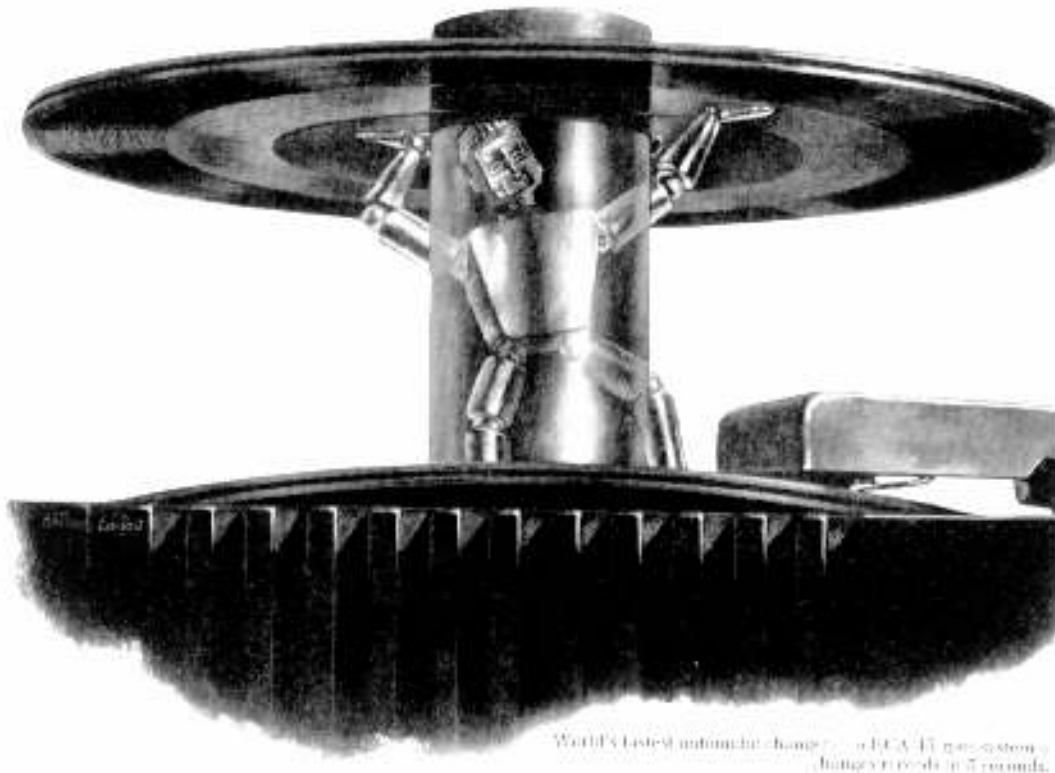


The 45rpm Phono Gazette



All the news that fits, we print



World's latest automatic changer... RCA 45J automatic changer records up to 7 records.

WELCOME TO OUR FIRST ISSUE!

Well it's hard to believe that we could have our own newspaper, yet here we are. As long as I have access to this equipment and the time, I intend to send out issues quarterly. Let me introduce myself. My name is Phil Vourtsis and I have been collecting these things since the early 1970's. During my childhood, there was a 45J attachment on top of our console RCA Television, and when I was 10 years old, my birthday present was a 7HF45 with mahogany wood cabinet. I still have the original 7HF45 but the original 45J attachment is long gone.

At first I thought I was the only one in the world who cared about these things so I quietly picked them up and spent my hobby time alone working on them. But almost 3 years ago I met a fellow at an Antique Radio swap meet who also collected them. Being able to share ideas with another collector really stirred my interest further. Now I have over 70 pieces in my collection and a book full of

original ads, RCA Service data and Sam's Photofacts. I've even given a talk at the New Jersey Antique Radio Club regarding the history of the players. There are many interesting stories to tell in future issues, but I would also like to include your interesting stories, so get in touch with me. The address and phone are; Phil Vourtsis 13 Cornell Place Manalapan, NJ 07726, 732-446-2427.



Most of the 45 players bear the RCA name but you will find other names on them as well. Crescent, Zenith, Admiral, Symphonic, Birch, Decca are just a few.

The 45rpm Phono Gazette

All the news that fits, we print

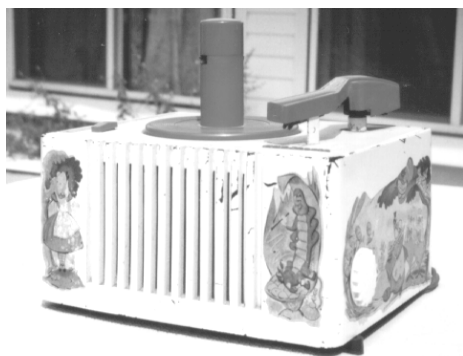


Figure 1 ALICE IN WONDERLAND
(Phil Vourtsis collection)

CARTOON MODELS

Alice in Wonderland is the most common cartoon machine that you will come across (production started in 1951). Harder to find, are the 1950 models which are either Disney characters (figure 2), or Roy Rodgers. These 2 models came equipped with the RP-168 record changer while the later model in the figure above came RP-190 equipped. Just in the last few weeks I managed to acquire this Disney model but a large piece of the front is missing out of the bakelite case. And last night I found out that my next door neighbor has this same Disney model which he has had since childhood. No, he's not willing to part with it!

It's kind of ironic that the only model that RCA painted (with leaded paint) is the children's model. Apparently bakelite could only be made in dark colors like brown, maroon, and black. So there is a warning label on the bottom of the cartoon players indicating that there is lead in the paint. Anyone interested in selling or swapping for one of these 1950 models please let me know.

Coming Articles

- Cartridges- original equipment vs modern replacements
- Oh those pesky rubber parts, especially the drive wheels
- The obscure RP-193 45 RPM record changer.
- Development criteria for design of 45 RPM record and record changer.
- The 45/16 RPM Record changer by Voice of Music (VM).
- Mid 50's Plastic models, the "gay pastelle colors".

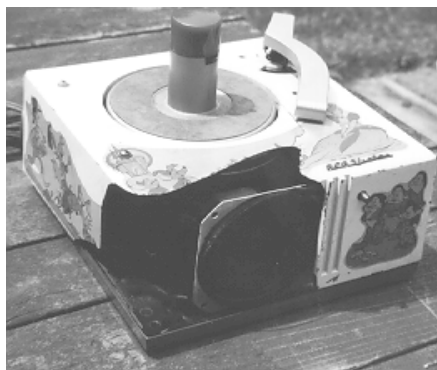


Figure 2 Model 45EY15 sports Disney characters.

~~WHAT A SHAME! THIS MUST HAVE TAKEN SOME FALL.~~

(Phil Vourtsis Collection)

Comment [AC1]: