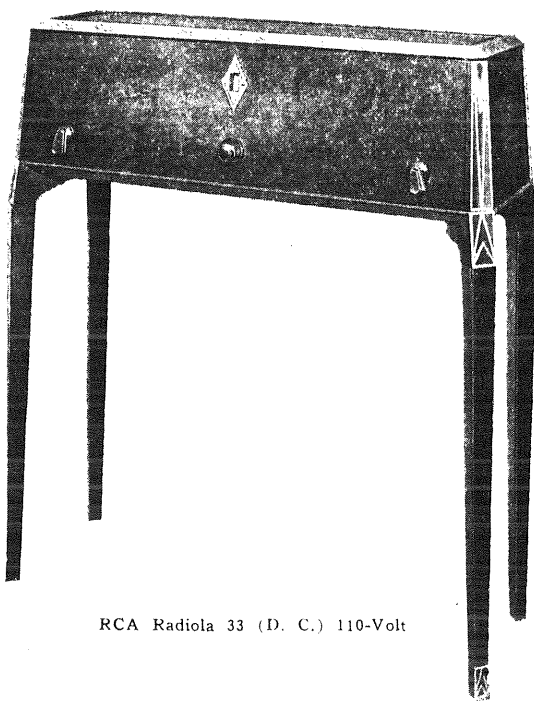


RCA

Radiola 33 (D.C.)

(110-VOLT)

SERVICE NOTES



RCA Radiola 33 (D. C.) 110-Volt

[First Edition—5M
Copyright August 1929]

RADIO-VICTOR CORPORATION OF AMERICA
233 BROADWAY, NEW YORK CITY

DISTRICT SERVICE STATIONS

BROOKLYN, N. Y.
Bldg. No. 19—168 - 39th St.

CHICAGO, ILL.
2001 West Pershing Road

SAN FRANCISCO, CAL.
274 Brannan St.

DALLAS, TEXAS
Santa Fe Bldg., Unit No. 2

ATLANTA, GA.
150 Peters St.

PREFACE

Service goes hand in hand with sales. The well-informed RCA Authorized Dealer renders service at time of sale in affording information as to proper installation and upkeep. Subsequent service and repair may be required by reason of wear and tear and mishandling, to the end that RCA Loudspeaker and Radiola owners may be entirely satisfied.

Obviously, this service can best be rendered by properly equipped service organizations having a thoroughly trained personnel with a knowledge of the design and operation of RCA Loudspeakers and Radiolas.

Such service organizations have been established by RCA Distributors, and RCA Authorized Dealers are advised to refer any major work or replacement to their selected Distributors. Minor replacements and mechanical and electrical adjustments may be undertaken by the RCA Dealer.

To assist in promoting this phase of the Dealer and Distributor's business the RCA Service Division has prepared a series of Service Notes—of which this booklet is a part—containing technical information and practical helps in servicing RCA Loudspeakers and Radiolas.

This information has been compiled from experience with RCA Dealers and Distributors' service problems and presents the best practice in dealing with them. A careful reading of these Service Notes will establish their value, and it is suggested they be preserved for ready reference.

In addition to supplying the Service Notes, the RCA Service Division maintains a corps of engineers who are qualified to render valuable help in solving service problems. These engineers call upon the trade at frequent intervals to advise and assist RCA Distributors in the performance of service work.

Property of Radio-victor Corporation of America. Confidential and to be used only by its Authorized Distributors and Dealers furnishing service in connection with its apparatus.

Copyright 1929—Radio-victor Corporation of America

CONTENTS

	Page
Preface	2
Introduction	5
Service Data Chart	22

PART I—GENERAL SERVICE DATA

Circuit Characteristics	5	Tuning Condensers Out of Alignment.....	11
Antenna (Outdoor and Indoor Types).....	7	Uncontrolled Oscillation	12
Radiotrons	7	Hum or Line Noise.....	12
Line Switch	8	Distorted Reproduction	13
"C" Battery	9	Audio Howl or Growl.....	13
Radiola 33 Wave Trap.....	10	Pilot Lamp	13
Adjustment of R. F. Compensating Condenser	11	Input Transformer, Output Transformer and Filter Condensers	14

PART II—ELECTRICAL TESTS

Voltage Readings	14	Testing Condensers and Testing for Defec- tively Grounded Parts.....	19
Voltage Supply System.....	15	Resistance Tests	19
Radiola 33 (D.C.) Continuity Tests.....	17		

PART III—MAKING REPLACEMENTS

Replacing Voltage Regulating Resistor or Fila- ment By-Pass Resistor.....	20	Replacing UX-171A Sockets.....	21
Replacing Filament Resistors	20	Replacing the Voltage Regulating Switch.....	21
Replacing the R. F. Line Inductors.....	21	Replacing Filter Reactors or Input Trans- former, Output Transformer and Filter Condensers	21

ILLUSTRATIONS

RCA Radiola 33 (D. C.) 110-volt.....	1	Aligning Tool	11
Top View of Receiver Chassis and Socket Power Unit	4	Radiotron Socket Layout	14
Schematic Circuit Diagram of Receiver Assem- bly and Socket Power Unit.....	8	Internal Connections of Input Transformer, Output Transformer and Filter Condenser...	15
Radiotron Sequence	7	Schematic Circuit Diagram of Voltage Supply System	15
Schematic Circuit Diagram of Receiver and Socket Power Unit.....	8	Continuity Wiring Diagram of Receiver Assembly	16
Adjusting R. F. Compensating Condensers....	10	Continuity Wiring Diagram of Socket Power Unit	18

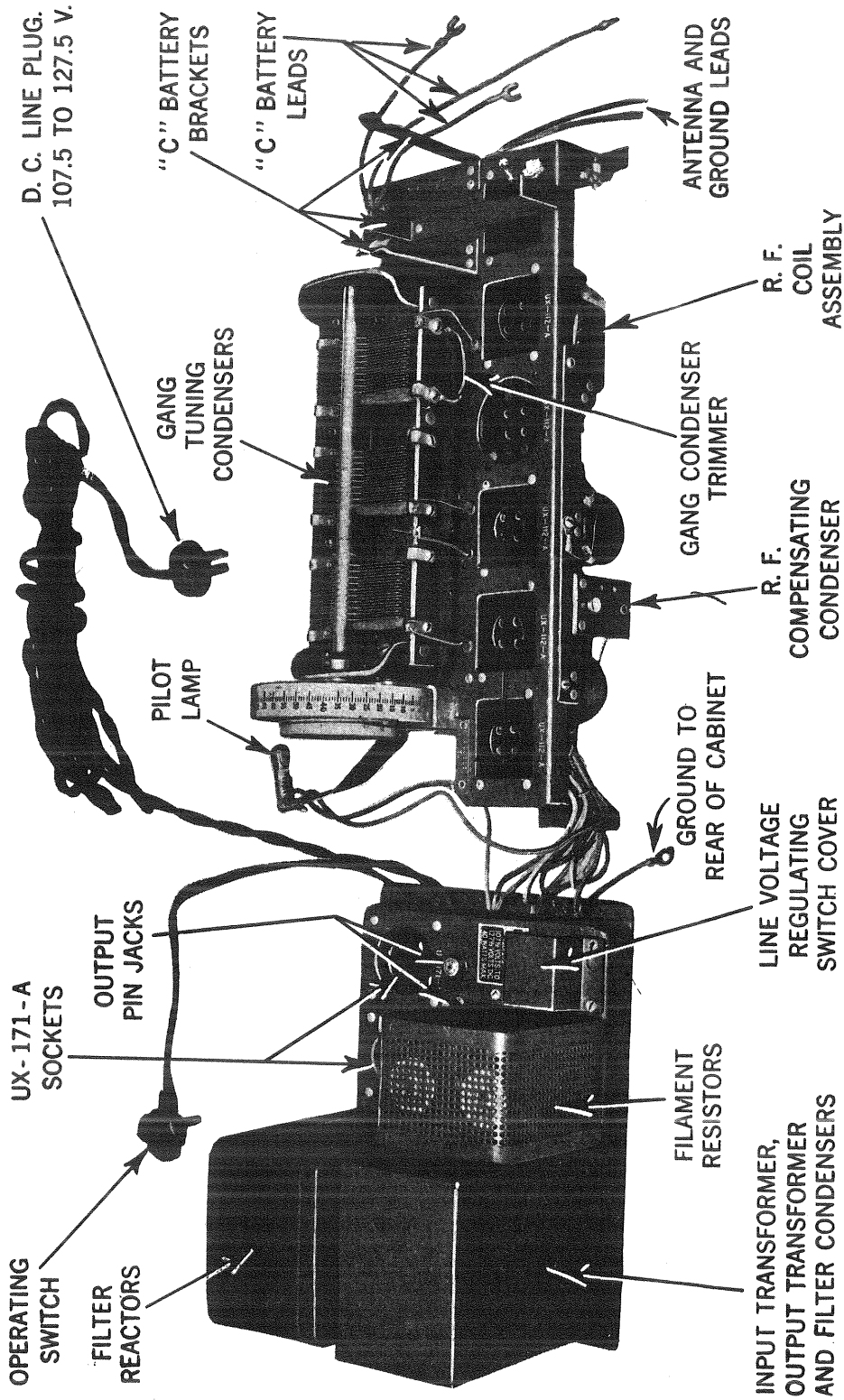


Figure 1—Top view of receiver chassis and socket power unit