

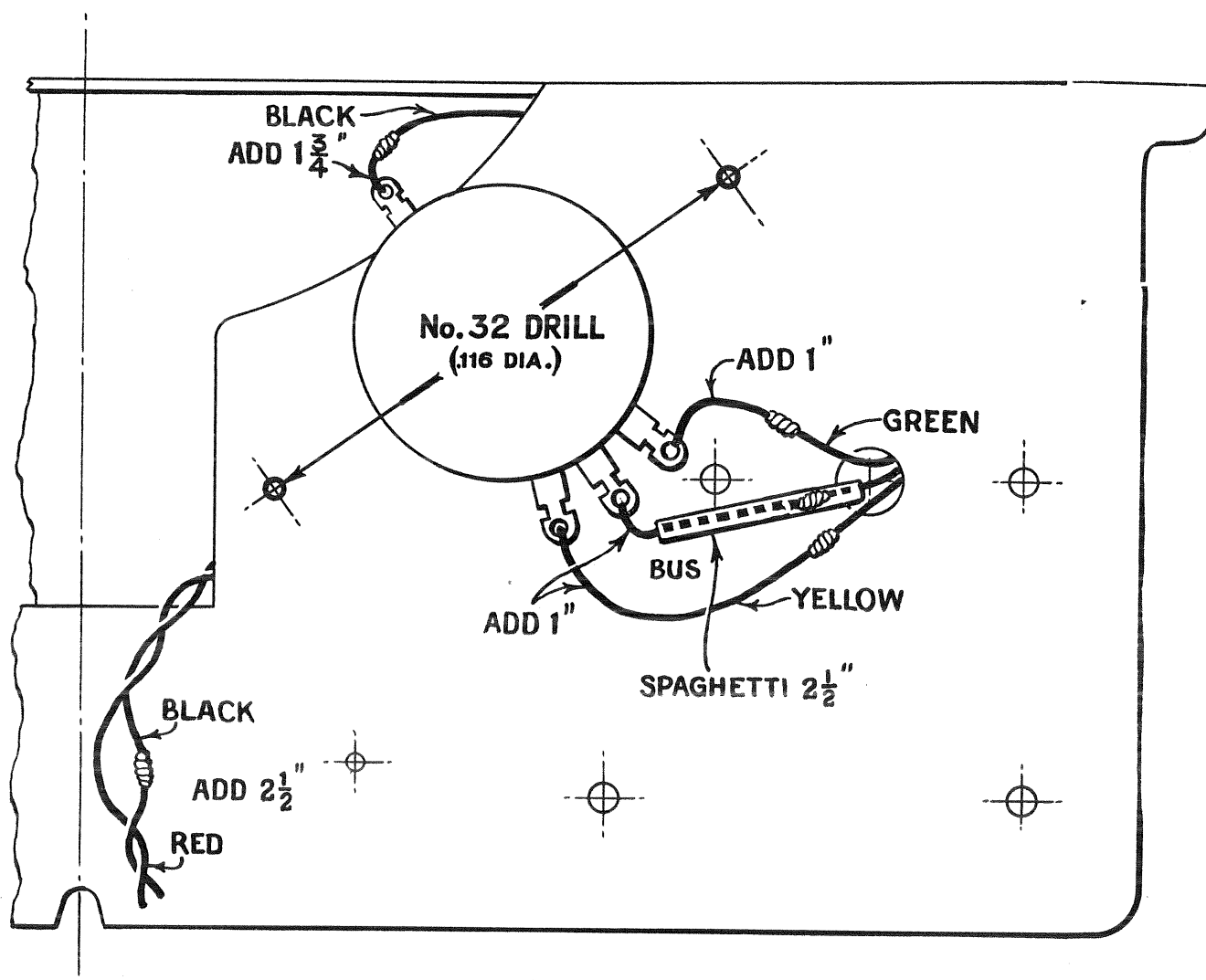
VOLUME CONTROL REPLACEMENT

The volume control on the All-Wave Receivers is now mounted on a bracket that makes replacement a simple and easy operation. However in older models, the volume control was mounted direct to the chassis from which location, replacement is difficult. For such replacements, we recommend that the shaft of the old volume control be sawed off and the new one mounted in the following manner:

(a) Saw off the old volume control. Use the following illustration for a template and drill two holes as shown.

(b) Mount the new volume control, Stock No. 6612 and Bracket Stock No. 4030 as shown. Two self-tapping screws and washers are furnished with the bracket.

(c) Unsolder the leads to the old volume control splice and connect them as shown. It will be noted that the power switch wiring to the tone control must be changed to enter through the large dial hole instead of the small hole.



.0764

SERVICE DIVISION
RCA Victor Company, Inc.

CAMDEN, N. J., U. S. A.

Printed in U. S. A.