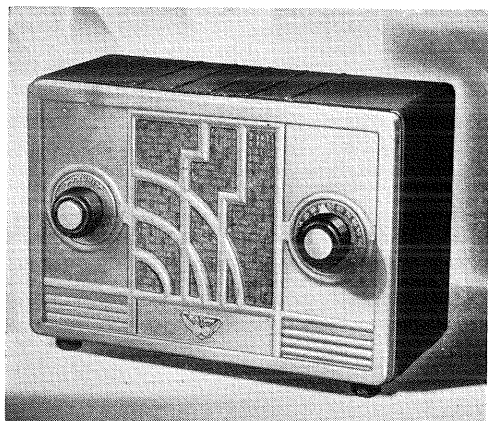


# MODELS NOT ILLUSTRATED

---

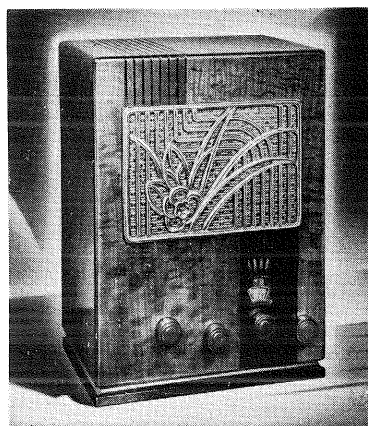
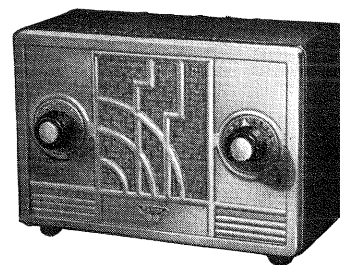


## MODEL 91-B

MODEL 91-B—A compact, portable three-tube battery set with good sensitivity, selectivity and tone. Five-inch magnetic speaker and volume control. Comes with 7-foot cable for storage battery connection and fuse in "B" battery lead as tube protector. Cabinet of metal, of midnight blue top and sides, silver front and back.

## MODEL 102

MODEL 102—Four-tube Standard T. R. F. radio capable of operation on A. C. or D. C. Police reception, five-inch permanent magnet speaker, 0.9-watt output. In blue-black metal cabinet with front and back silver lacquered.  $9\frac{3}{4}$ " wide,  $6\frac{3}{4}$ " high,  $5\frac{1}{8}$ " deep.

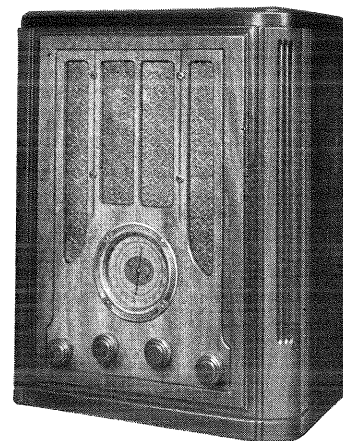


## MODEL 124

MODEL 124—A 6-tube Superheterodyne with automatic volume control, tone control, 6-to-1 vernier tuning, big dynamic speaker, police call reception, illuminated dial. Cabinet with aspen veneered front panel and metallic-finished grille.

## MODEL 135-B

MODEL 135-B—A seven-tube, two-band (540 to 1720 and 5400 to 18,000 kc.) Globe Trotter Superheterodyne operating on batteries. Identical with Model 235-B, except for eight-inch permanent magnet speaker and table cabinet. Cabinet neo-classic with two-tone hand-rubbed finish.  $17\frac{13}{16}$ " high,  $14\frac{1}{2}$ " wide, 10" deep.

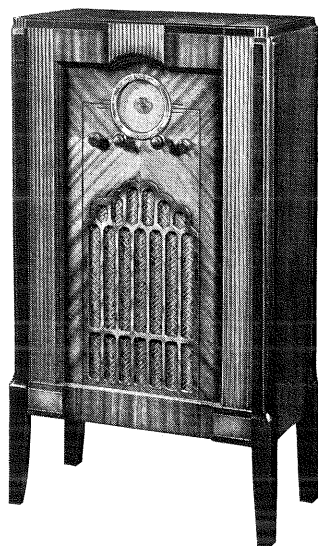
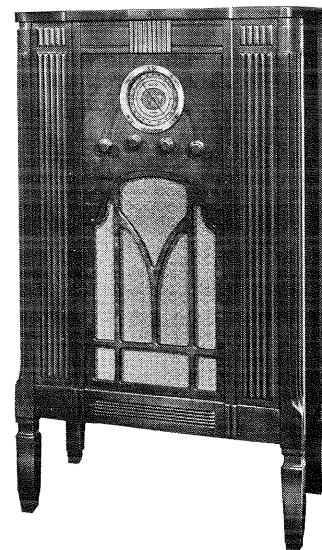


# MODELS NOT ILLUSTRATED

---

## MODEL 211

MODEL 211—A five-tube, two-band (540 to 1720 and 5400 to 18,000 kc.) Superheterodyne Globe Trotter identical with Model 118, but housed in an engaging console cabinet and equipped with a ten-inch dynamic speaker. Cabinet is of neo-classic design with blended, hand-rubbed walnut finish. Dimensions: 40" high, 23½" wide, 11⅜" deep.

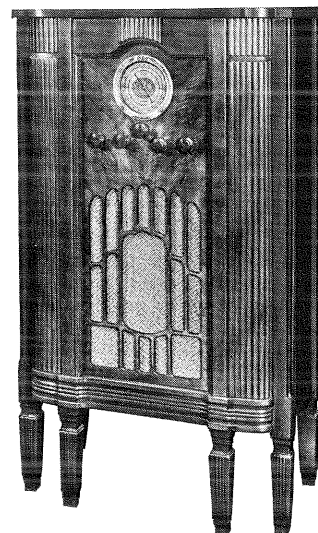


## MODEL 221

MODEL 221—A six-tube, two-band (540 to 1500 and 5400 to 15,500 kc.) Superheterodyne Globe Trotter with ten-inch dynamic speaker, airplane dial, dual ratio vernier tuning, automatic volume control, tone control, and 3.5 watts output. In neo-classic console finished in two-tone blended walnut. 40" high, 23½" wide, 12⅞" deep.

## MODEL 224

MODEL 224—A six-tube, three-band (540 to 18,000 kc.) Superheterodyne Globe Trotter with the identical chassis of Model 128, but equipped with a ten-inch dynamic speaker, and housed in a cabinet of console type. Cabinet is neo-classic in style and finished in blended, hand-rubbed walnut. 41" high, 24½" wide, 12¼" deep.



# MODELS NOT ILLUSTRATED

---

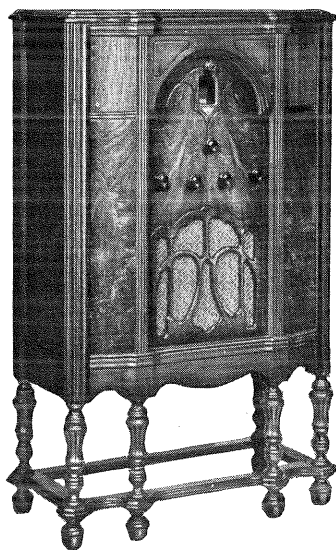
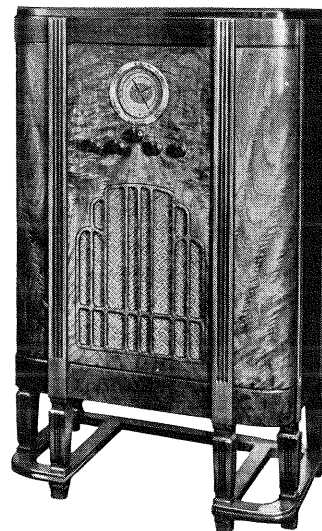


## MODEL 240

MODEL 240 WORLD-WIDE RADIO—A powerful eight-tube Superheterodyne (short-wave and standard programs) with remarkable tone quality and freedom from background noises. Automatic volume control, 50-to-1 vernier tuning, tone control, oversize dynamic speaker, full vision airplane dial. Housed in a beautiful walnut veneered console.

## MODEL 242

MODEL 242—An eight-tube, four-band (140 to 410 and 540 to 18,000 kc.) Superheterodyne Globe Trotter, identical with Model 143, except for a ten-inch dynamic speaker and a console cabinet. Cabinet is neo-classic in design. Finish is blended, two-tone, hand-rubbed walnut. 41½" high, 26" wide, 14" deep.



## MODEL 261

MODEL 261—A magnificent ten-tube standard (540 to 2800 kc.) Superheterodyne with ten-inch dynamic speaker, vernier tuning, hi-low tone control, sensitivity control, automatic tone compensation, automatic volume control and eight watts output. In console cabinet with aspen overlays and oriental wood veneers. 41¾" high, 26½" wide, 14½" deep.

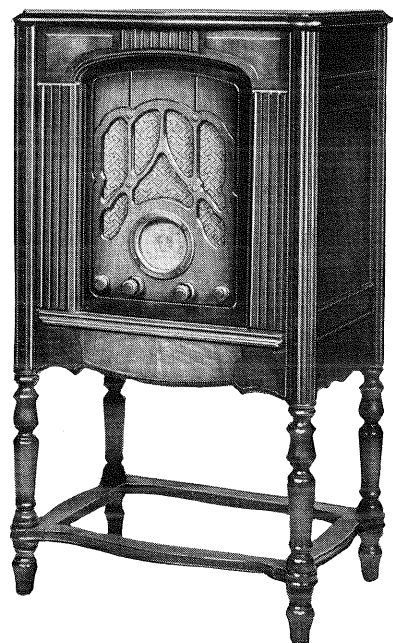
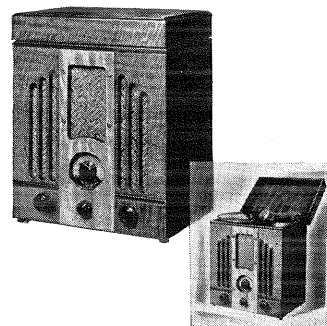
---

# MODELS NOT ILLUSTRATED

---

## MODEL 301

Duo 301—A four-tube standard Superheterodyne combined with electric phonograph. (Range 540 to 3500 kc.) Tone control, illuminated dial, five-inch dynamic speaker, 2.5 watts output, police reception, electric pickup, synchronous motor. In mahogany-veneered table cabinet with aspen overlays. 14 $\frac{3}{4}$ " high, 11 $\frac{1}{2}$ " wide, 9" deep.



## MODEL 320

MODEL 320—The radio chassis of the Model 320 is similar to that of the 122, with the exception that it uses a full ten-inch loudspeaker. The phonograph has a two-speed turntable, magnetic pickup, inertia suspension arm and synchronous motor. The radio record switch is combined with the phonograph volume control and mounted on the motor board. The console cabinet is of classical Eighteenth Century design of walnut veneers.

## MODEL 321

Duo 321—A six-tube, two-band (540 to 1500 and 5400 to 15,500 kc.) Globe Trotter Superheterodyne with two-speed all-electric phonograph. ten-inch dynamic speaker, air-plane dial, dual ratio vernier tuning, automatic volume control, tone control and 3.5 watts output. In walnut-veneered console cabinet. 40" high, 21 $\frac{7}{8}$ " wide, 15" deep.

